



**PREVENTATIVE
MAINTENANCE SOLUTIONS**

2-TUBE COOLANT EXCHANGER

MODEL #94470

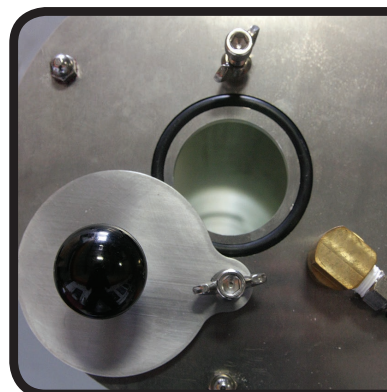
KEY FEATURES:

- **UNIVERSAL VACUUM NOZZLE**
- **NO ADAPTORS NEEDED** • **ELIMINATES AIR POCKETS**
- **A STATE-OF-THE-ART DESIGN**
- **DURABLE ALUMINUM CONSTRUCTION** • **OPERATES ON SHOP COMPRESSED AIR** • **CONVENIENT 2 INCH QWIK SAFE-SEAL FILL LID**
- **COLOR-CODED VALVES FOR EASY IDENTIFICATION AND USE**
- **ENERGY SAVING AND ENVIRONMENTALLY SAFE**
- **NO HOSES TO DISCONNECT** • **FOOT BRAKE-SAFE AND EASY TO MOVE**
- **NO COOLANT SPILLS ON THE SHOP FLOOR** • **NO ELECTRICITY OR BATTERIES REQUIRED**

MOC®'s 2-TUBE COOLANT EXCHANGER allows the technician to quickly perform a coolant exchange directly from the radiator spout or expansion tank.

OVERVIEW: The patented **MOC® 2-Tube Coolant Exchange Machine** represents the latest technology in coolant fluid exchange machines. It can rapidly remove coolant from the radiator or expansion tank without having to disconnect any hoses, keeping the shop floor clean and environmentally safe. The **MOC® 2-Tube Coolant Exchanger** is built to last with stainless steel and aluminum construction.

THE SERVICE: The **MOC® 2-Tube Coolant Exchanger** removes old coolant from the radiator or expansion tank. To complete the service, a quick turn of the valve and the vacuum created in the radiator draws the new coolant back into the cooling system.



SPECIFICATIONS:

Dimensions:	19" W x 16" D x 58" H
Weight (dry):	79 lbs. (35.834 kg)
Chassis:	Stainless Steel
Power:	Shop compressed air
Tank (2):	5 gallon capacity (translucent)
Vacuum Hose:	6' reinforced transparent hose
Limited Warranty:	2 year limited warranty

