



**PREVENTATIVE  
MAINTENANCE SOLUTIONS**



## AUTOMATIC TRANSMISSION FLUID EXCHANGER

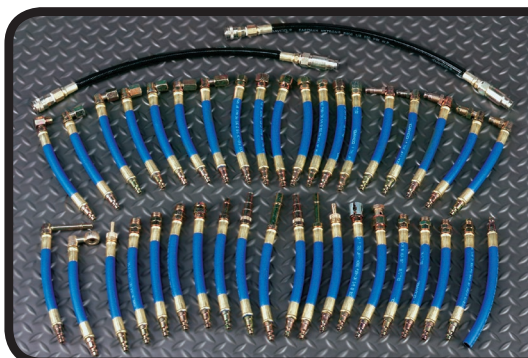
MODEL #94500 U.S. Patent No. 6,698,472

### KEY FEATURES:

- **ONE-TO-ONE FLUID TRANSFER**
- THE MOC® FLOW-CONTROL SYSTEM ALLOWS FOR FAST SERVICING (APPROXIMATELY 8 MINUTES) EVEN ON “LOW-FLOW” VEHICLES
- AUTOMATIC ONE-TO-ONE SYSTEM PREVENTS UNDERFILLS AND OVERFILLS
- **ONE-TOUCH INTERFACE PANEL**
- ONE-TOUCH DRAIN BUTTON FOR A DROP-THE-PAN SERVICE (FILTER REPLACEMENT) • ONE-TOUCH NEW-FLUID TOP-OFF
- **COMPUTER-CONTROLLED SYSTEM**
- A SELF-DIAGNOSTIC SYSTEM WILL REPORT TROUBLE-CODES IF A MALFUNCTION IS DETECTED
- **COMPLETE ADAPTOR KIT FOR DOMESTIC / FOREIGN VEHICLES**
- INCLUDES ADAPTOR APPLICATION AND IDENTIFICATION CHART
  - ALL ADAPTORS COME WITH DRIPLESS COUPLERS
- **ONE MACHINE FOR ANY TYPE OF ATF** • REMOVABLE COLOR-CODED TANKS

***MOC®’s ATF Exchanger Allows the Technician to Perform a Complete Transmission Fluid Exchange. State-of-the-Art Features Make This ATF Exchanger the Fastest and Most Versatile Machine on the Market.***

**OVERVIEW:** This system allows the fastest fluid exchange in the industry today, even on low pressure systems, such as Toyota® and Ford®. The process is as simple as pressing one button, and attaching an adapter to the transmission’s cooler lines. The MOC® Fluid Control System self-identifies fluid-flow direction—permitting old fluid to be automatically removed at the same rate new fluid is added. When the service is complete, the System automatically recirculates fluid to the vehicle to prevent damage. The push of a button will drain or top-off the system if a final fluid-level adjustment is desired. To add even more convenience and cost-effectiveness, the ATF Exchanger features interchangeable color-coded tanks to eliminate the inconvenience and expense of using multiple machines for different types of ATF. The technician can simply remove the “New-Fluid” tank for one type of ATF and attach a different tank.



### SPECIFICATIONS:

<b>Dimensions:</b>	40" H x 24" W x 22" D
<b>Weight (dry):</b>	90 lbs. (40.823 kg)
<b>Chassis:</b>	Linear low-density Polyethylene
<b>Power:</b>	12 VDC
<b>Tank (new &amp; used fluid):</b>	Capacity – 24 quarts per tank
<b>Hoses:</b>	10 Ft. high temp. with shut-off couplers
<b>Limited Warranty:</b>	1 year, parts